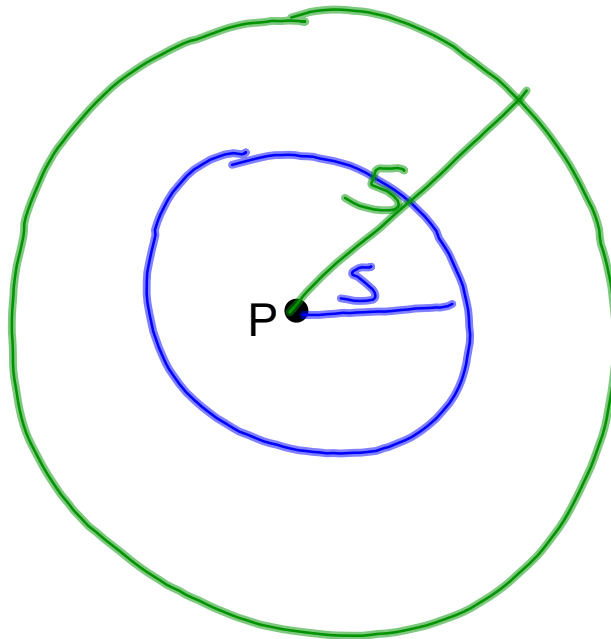
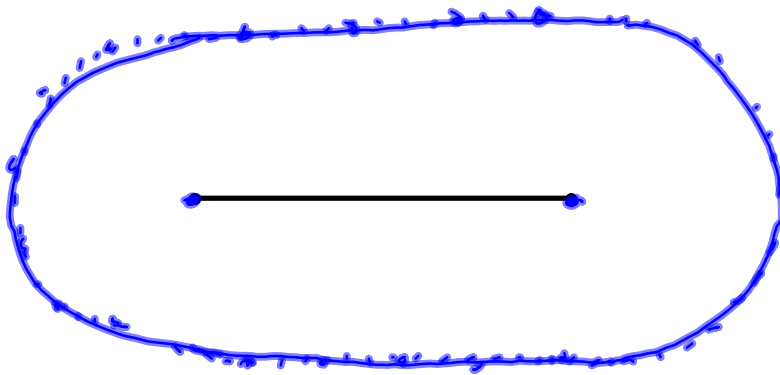


Do-now:

1. Take out Locus Theorem sheet from yesterday.
2. What is the locus of points 5 units from point  $P$ ?

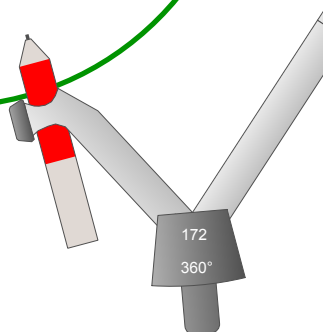
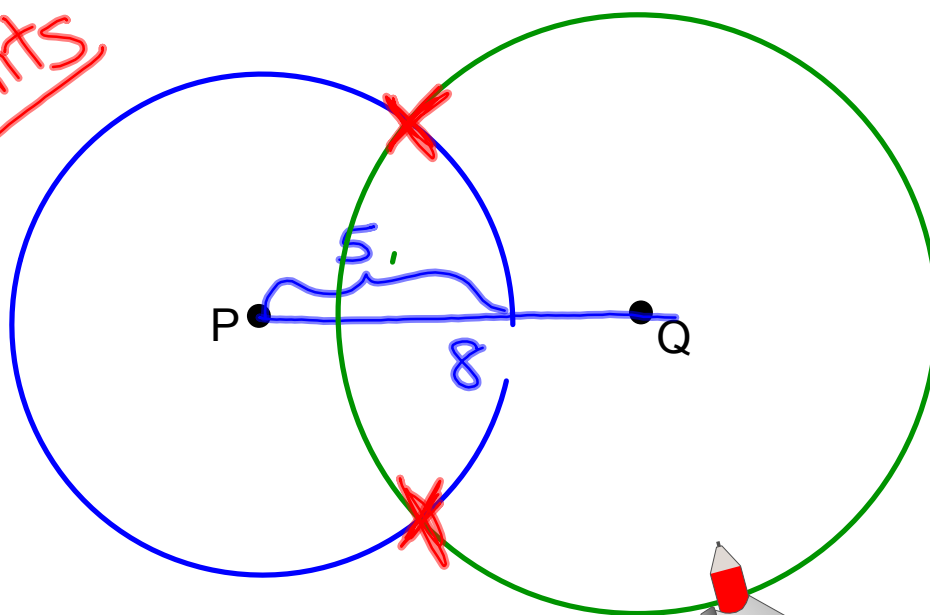


What is the locus of points 3 inches away from the LINE SEGMENT below?

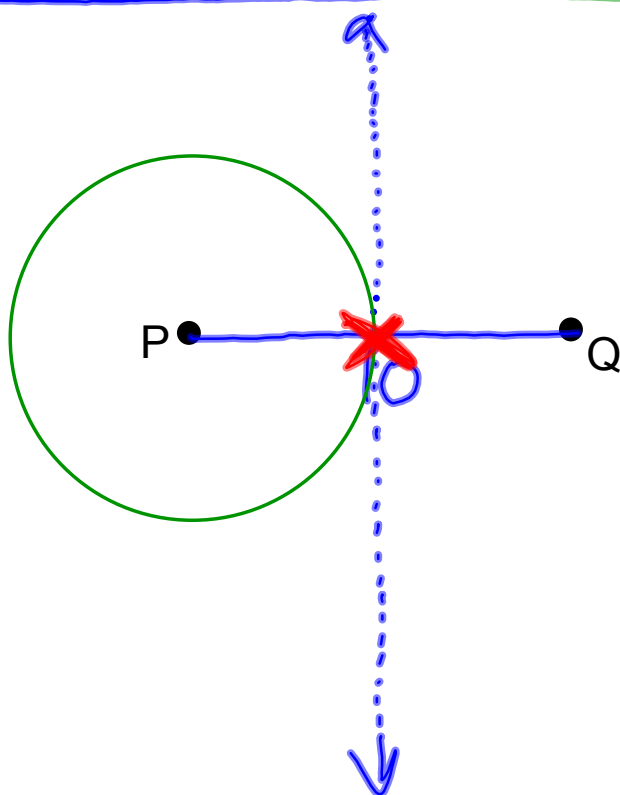
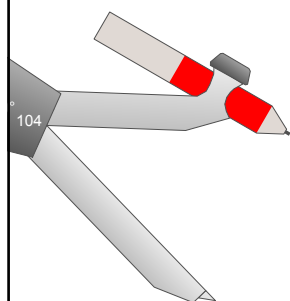


Points  $P$  and  $Q$  are 8 units apart. What is the locus of points 5 units from point  $P$  AND 7 units from point  $Q$ ?

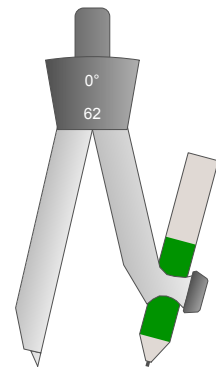
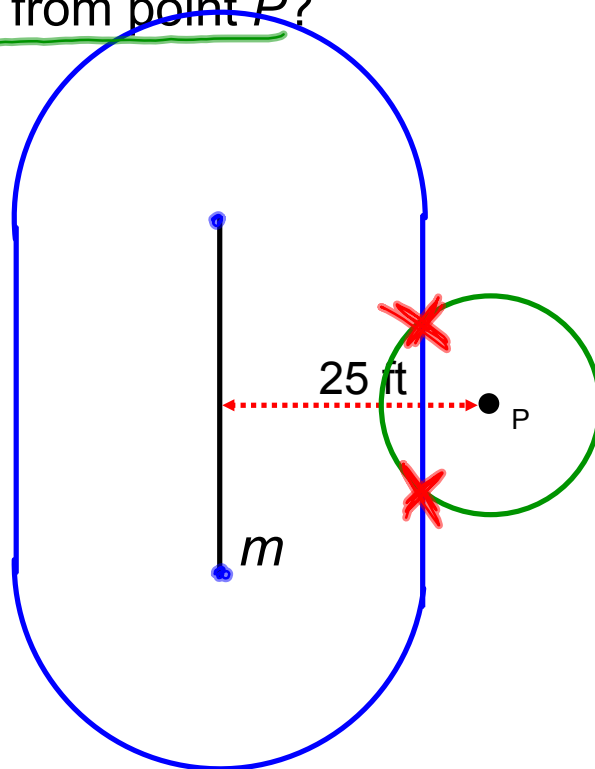
*2 points*



Points  $P$  and  $Q$  are 10 units apart. What is the locus of points equidistant from points  $P$  and  $Q$ , AND 5 units from point  $P$ ?



What is the locus of points 20 feet from line segment  $m$   
and 10 feet from point  $P$ ?



Lines  $\overleftrightarrow{GH}$  and  $\overleftrightarrow{MN}$  are 8 inches apart. What is the locus of points equidistant from the two lines AND 4 inches from point P?

